

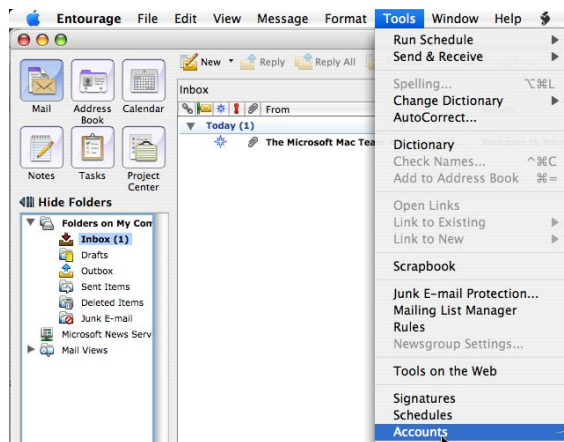
Configure glooqLight

Entourage

To configure your Entourage, please follow the detailed steps below:

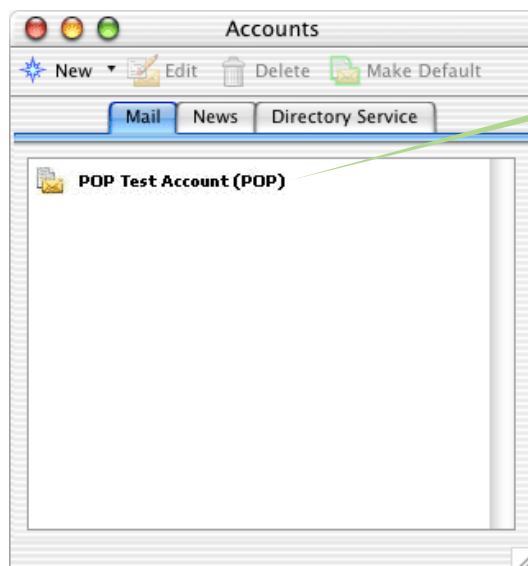
1.

Open your Entourage client. Click "Tools" → "Accounts".



2.

Select your existing account and click "Edit".



3.

- a. Change the "Sending mail server (SMTP)" to the address that is given to you by glooq.
- b. After you change the SMTP server name, click on the "Advanced sending options".



Do not change the "Receiving mail (POP3)" or "Account ID".
These settings are for your incoming mail and are not managed by glooq.

Edit Account

Account Settings Options

Account name:

Include this account in my "Send & Receive All" schedule

Personal information

Name:

E-mail address:

Receiving mail

Account ID:

POP server:

Password:

Save password in my Mac OS keychain

[Click here for advanced receiving options](#)

Sending mail

SMTP server:

[Click here for advanced sending options](#)

Cancel OK

a. Change "SMTP server"

b. Click Here

4.

Select the "SMTP server requires authentication", choose the "Log on using" and make sure that the configuration is as follows:

[The Account ID & Password will be provided by the glooq technical division.]

After you're done, just click "OK" → "Next" → "Finish".

The screenshot shows an email configuration window with two main sections: "Receiving mail" and "Sending mail".

Receiving mail section:

- Account ID: user@domain
- POP server: mail.domain
- Password: Your Account Password
- Save password in my Mac OS keychain
- Click here for advanced receiving options

Sending mail section:

- SMTP server: smtp.domain
- Click here for advanced sending options

SMTP Authentication options:

- SMTP service requires secure connection (SSL)
- Override default SMTP port: 25
- SMTP server requires authentication
 - Use same settings as receiving mail server
 - Log on using

Log on using section:

- Account ID: emailaddress
- Password: ●●●●●●●●
- Save password in my Mac OS keychain

Domain for unqualified addresses:

That's it. You're set to go.

We hope that you will enjoy using our unique glooqLight system.

For any query please do not hesitate to contact us on support@glooq.com